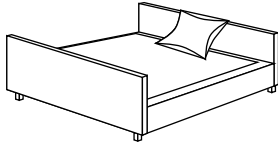
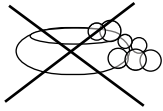
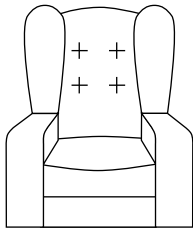
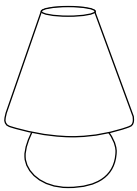
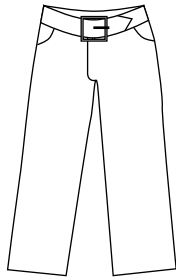
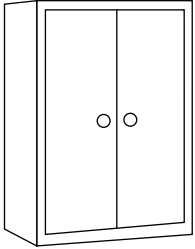


# To jest mój pokój.

Finde polnische Begriffe in dem Kasten und male die Kästchen aus. Die Buchstaben, die übrig bleiben, gelesen von oben, ergeben die Lösung. Trage sie in die Kästchen unten ein!

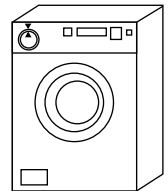
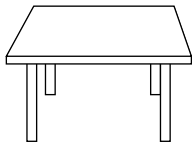


K	M	Y	D	Ł	O	S
R	L	A	M	P	A	P
Z	F	O	T	E	L	O
Ł	Ó	Ż	K	O	E	D
S	S	Z	A	F	A	N
M	A	J	T	K	I	I
Ł	B	U	T	Y	O	E



--	--	--	--	--	--	--

Antworte auf die Frage: „Co to jest?“



To (jest)



mój

